



MONTHLY MEMBERSHIP PROGRESS REPORT

District 303

Results as of: 05/31/2018

GMT: TERESA MANN

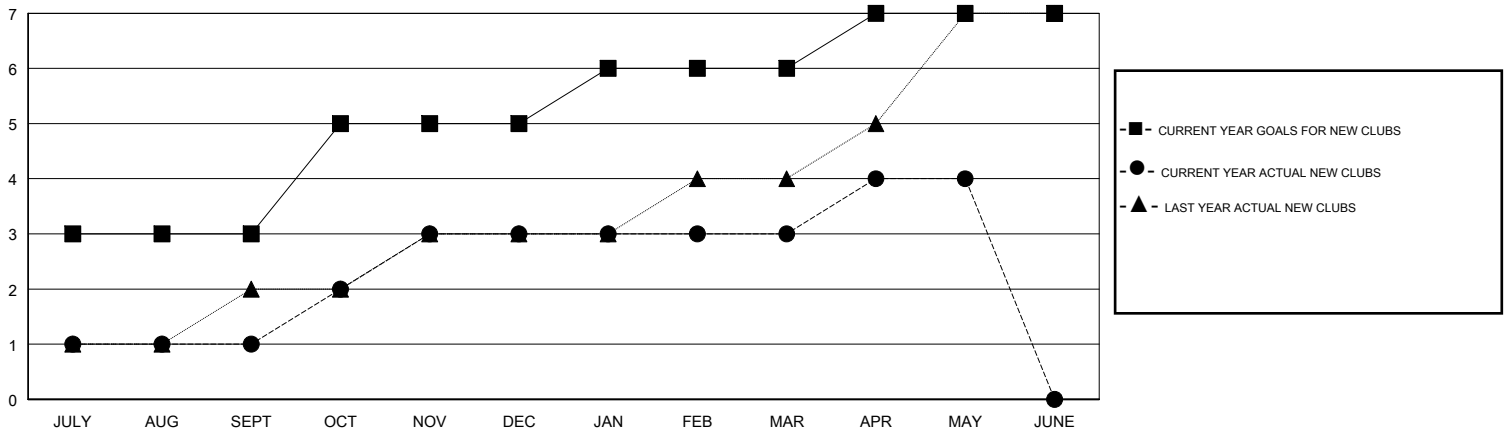
LOCATION HONG KONG, CHINA

GMT CA

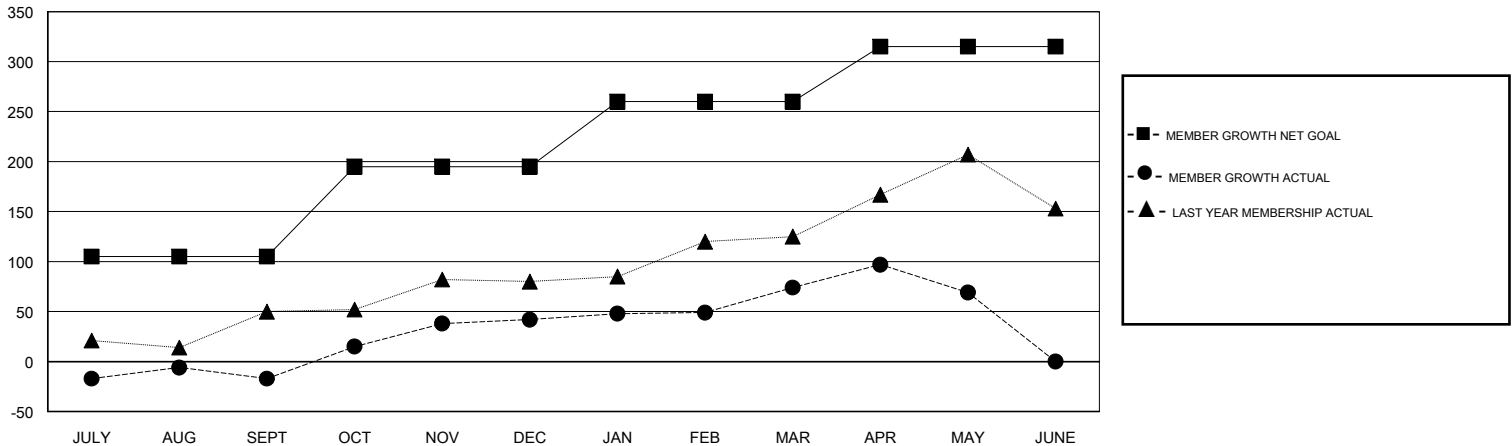
Clubs			
RESULTS FOR 2017-2018			
QUARTER	NEW CLUB GOAL	NEW CLUBS	DROPPED CLUBS
JULY/AUG/SEPT	3	1	0
OCT/NOV/DEC	2	2	0
JAN/FEB/MAR	1	0	0
APR/MAY/JUNE	1	1	0

Members			
RESULTS FOR 2017-2018			
QUARTER	MEMBER GROWTH NET GOAL	MEMBER GROWTH ACTUAL	DROPPED MEMBERS ACTUAL (including transfers)
JULY/AUG/SEPT	105	175	185
OCT/NOV/DEC	90	90	28
JAN/FEB/MAR	65	68	36
APR/MAY/JUNE	55	40	45

GOALS AND ACTUAL NEW CLUBS CUMULATIVE



GOALS AND ACTUAL MEMBERS CUMULATIVE



DROPPED CLUBS: 0

71 CLUBS OF 90 ADDED 1 OR MORE NEW MEMBERS

GENDER DISTRIBUTION	
MALE	1,606 (72.02%)
FEMALE	624 (27.98%)
Women Percentage Fiscal Year Goal: 28%	

DROPPED MEMBERS	
DECEASED	9
CLUB CANCELLED	0
OTHER	285
TOTAL	294

[CLICK HERE FOR CUMULATIVE MEMBERSHIP DATA](#)

TOTAL FAMILY UNIT MEMBERS	70
FAMILY MEMBERS PAYING HALF DUES	39